

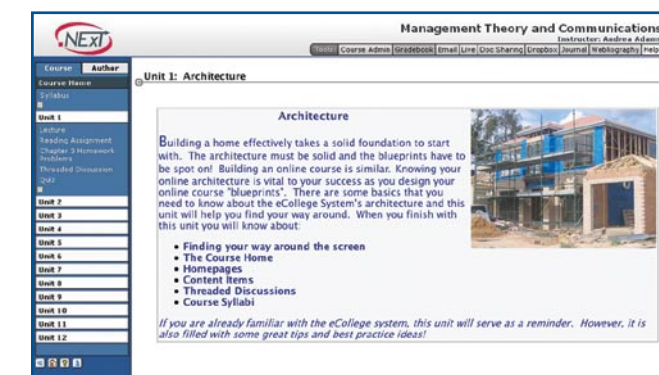


## An Intuitive, Flexible Course Authoring and Delivery System

### Productive Teaching and Learning on a Whole New Level

The eCollege Course Management System (CMS) is a highly intuitive course authoring and delivery environment loaded with efficient tools that increase the success of online teaching, facilitate rich course interaction and provide opportunities for course customization.

Recently named Best in Category by the IMS Global Learning Consortium, eCollege offers the industry's leading CMS.



*A feature-rich course delivery environment that's easy to use.*

### Design Engaging Online Courses

Designed for the creation of fully online courses, the eCollege CMS offers management and creation tools that increase instructor efficiency. For example, the Gradebook tool gathers all student submissions in one, central location where instructors can assess and grade their assignments. The CMS includes tools for file management, communication and activity tracking.

### Customize for Flexible Learning

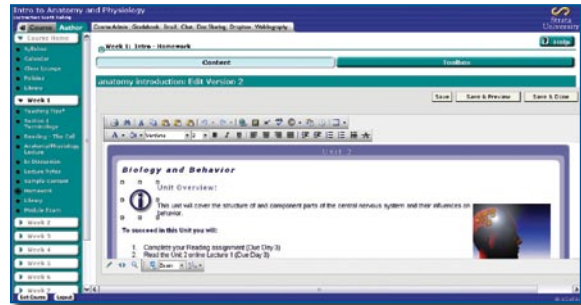
eCollege specifically designed its CMS to support the way teachers teach and students learn, leveraging a unit-based design. With this design, teachers can group content, activities and assessments, promoting intuitive navigation for both instructors and students. Courses can be organized to suit personal teaching styles, thereby making the eCollege CMS the most flexible course management system available today. Additionally, the course navigation tool is shown at all times, so users can always know where they are in the course.

### Author Courses with Ease

Building an online course with the eCollege CMS is quick and easy. Instructors can create an entire online course without using HTML. With the integrated Visual Editor available in every instructor text-editing area, authoring course content is as easy as working in a Microsoft Word® document or uploading PowerPoint® slides for classroom presentations.

### Create Rich Interaction

The eCollege CMS is the only system on the market today that offers a robust feature set that quickly integrates interactive media. In addition, an intuitive user interface and advanced course activity tools enable instructors to create high-level interactions with minimal design and creation time.



The eCollege Visual Editor allows instructors to easily design and implement online courses.

The industry-leading eCollege CMS supports successful online educational programs by enabling increased instructor efficiency, facilitating interaction and providing course customization. The following five function categories make up the eCollege CMS:

- Architecture
- Accessibility
- Administration
- Authoring
- Activity

### Architecture

Ensures a Flexible, Usable and Supportive Learning Environment

**CourseFlex Navigation<sup>SM</sup>**—Enables instructors to organize their course content in a way that best meets their needs—by sequential units (weeks or chapters) and by features (lectures, threaded discussions and exams).

### Accessibility

All eCollege CMS applications and support services have achieved unprecedented levels of accessibility and usability for blind, deaf and mobility-impaired faculty and students. eCollege has satisfied standards set forth by Section 508, the U.S. Federal Accessibility Standard for electronic and information technology.

### Administration

Promotes Ease of Use and Superior Functionality

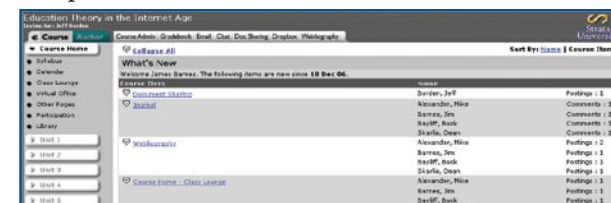
**Group Manager**—Automatically generates an e-mail alias, private chat room and Document Sharing area for each group. All course content also can be assigned to a specific group.

**Announcements**—Allows instructors to post messages for their students to see when they log into the course. These messages are only displayed during instructor-specified start and end dates.

**What's New**—Informs instructors, when they login, of any new student postings since the last time the instructor logged into the course.

**Course Scheduler**—Functions as the centralized scheduling point for start and end access dates of course content and activities.

**Calendar**—Offers an integrated and downloadable calendar that displays course, as well as personal and campus events.



Course administration tools are available to instructors from the Course Home Page.

### Authoring Makes Building Courses Easy

**Visual Editor**—Allows for robust online editing and original content creation without using HTML code in all instructor text-editing areas. The Visual Editor also includes an easy-to-use symbol palette for creating and editing math and science equations, as well as links together any areas of the course to allow for directed self-regulating, remediating and exam feedback references.

**Exam Builder Plus**—Enhances exam functionality with features such as kick-out options, password protection and time-specific scheduler.

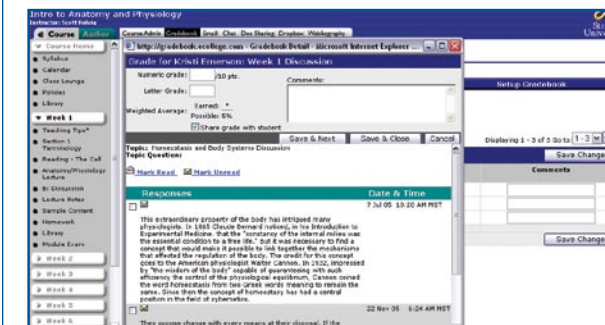
**Microsoft Upload Tools**—Automatically converts Microsoft Office® documents to HTML for online course display.

**File Manager**—Enables instructors to upload streaming media (Real®, Windows Media® and Quicktime®) directly into the course, without any limits on file size.

### Activity Provides Maximum Personalized Interaction

**Threaded Discussions**—Provides the most advanced discussion tools available, allowing students and faculty to read an entire discussion on one page, as well as e-mail directly from a thread.

**Gradebook**—Consolidates all student submissions into one easy-to-access location, including thread posts, Dropbox submissions, exam statistics, Journal entries and completed assessments.



The Gradebook tool provides a central location for instructors to assess class assignments and provide student feedback.

**User Activity**—Enables faculty to view, to the minute, how much time each student has spent in each area of the course, as well as the dates of each visit.

**Dropbox**—Serves as the central student submission area organized by assignment. It also conveniently integrates with the Gradebook.

**Document Sharing**—Allows students and instructors to share documents with the entire class or with specific groups of students.

**ClassLive<sup>SM</sup>**—Provides a synchronous suite of tools, including extensive mathematic capabilities such as graphing and equation toolbars to facilitate live problem solving, as well as application viewing. The eCollege ClassLive® tool is powered by Elluminate®.

**Webliography**—Provides a resource of Web links posted to the course by both instructor and student.

**Journal**—Allows students to keep an online journal that can be shared with the instructor or be kept private.



To learn how the IMS Global Learning Consortium selected the eCollege CMS as its Best in Category recipient, or to read the full IMS Global Learning Consortium Learning Technology Trends and Satisfaction report, visit [www.imsglobal.org/ltst/index.cfm](http://www.imsglobal.org/ltst/index.cfm).